



UK PASSIVHAUS OPEN DAYS 2016

11 - 13 November

WHEN

SAT 12th 1pm
2pm
3pm

Max people/tour: 8
No shoes inside

Tectonics Architects' Lansdowne Drive won the 2016 UK Passivhaus Awards urban category. The 2-storey house is located in a conservation area in Hackney, and sits on an urban infill site. 2 bedrooms at lower ground floor, with an open-plan living space on the upper level. The construction consists of in-situ reinforced concrete, and a prefabricated Cross Laminated Timber. Construction materials are left exposed internally.



WHERE

32A Lansdowne Drive
London
E8 3EG

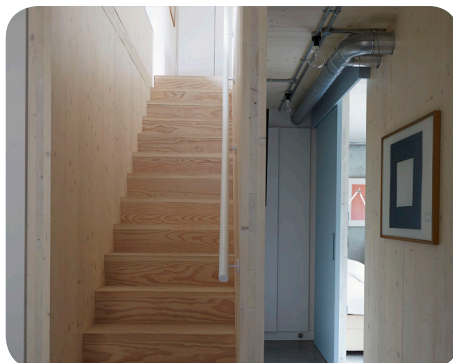
Nearest Station/ Stop:
Dalston Junction or London Fields
(overground)

BOOKING

Pre booking is essential
studio@tectonics-architects.com

Please include PH Open Day 161112
in the subject line.

LANSDOWNE
D R I V E
PASSIVHAUS



TEAM

Tectonics Architects
Accredited Passivhaus Design