



2018 UK PASSIVHAUS OPEN DAYS

09 - 11 November

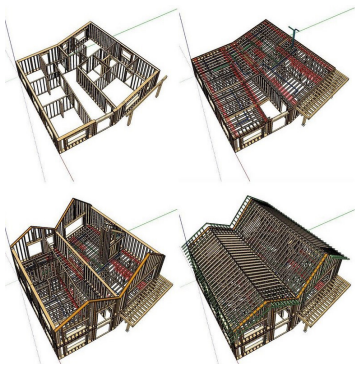
WHEN

SAT 10th 10am - 4pm

Max group size: 10

NB: this is a construction site, please dress appropriately.

Currently under construction, this project is an architect-designed upside-down house designed to merge into its AONB setting and to meet 'lifetime homes' criteria. This is a timber and metal clad timber frame construction sitting on a heavy duty raft due to poor soil conditions. Unusual features include a slightly hexagonal shape and sloping roof ridges.



WHERE

Two Acres, Colchester Road,
Dedham, Essex CO7 6DL
Some parking is available on site.
Nearest train station:
Colchester (7miles)/Manningtree (4-5
miles)
Bus services:
81/81A every 2hrs to/from Colchester

BOOKING

John Sandbach
johnsandbach-ph@yahoo.com

DEDHAM PASSIVHAUS



TEAM

Clients: John & Susan Sandbach
Architects: Joanna Lindley, Justin Smith
Contractor: Roger Thomas & Sons
Consultant: Roderick Williams