



PROJECT NO: 15 | SKILLS FOUNDRY 4

# Southside

Southside will provide a vibrant, inspiring and inclusive sports, food and skills community focal point for the people of South Wye, the most deprived element of Hereford's population. Southside is a collaboration between two highly energised established community organisations Growing Local CIC and Belmont Wanderers CIC, and NMITE, all of whom share a common goal to improve the future health, well-being, life-chances and employment skillset of the people of South Wye and Hereford. The heart of the project will be the creation of a single physical building - Southside - which will accommodate all partners.

## RATIONALE

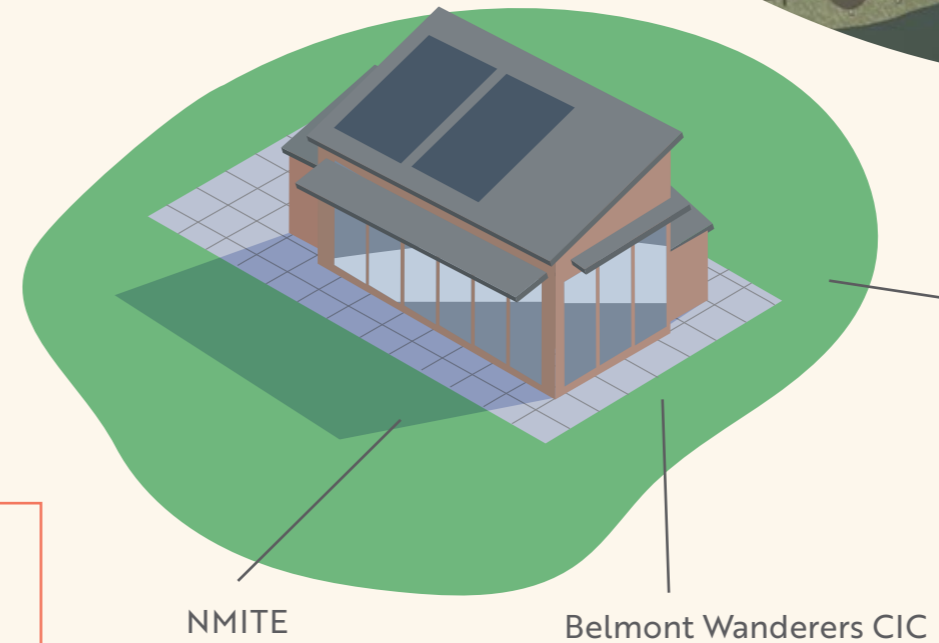
The Southside project will be located in Newton Farm in South Wye, all of which falls in the bottom 10 - 20% most deprived neighbourhoods nationally. There are very few opportunities to engage children, young people, families or adults in this area. The hub, sports pitches and gardens will provide a destination and will be accessible seven days a week.

This project will help achieve our objective to make Hereford a fairer city and will deliver the following Towns Fund Intervention Framework outcomes:

- 1. Increased share of young people and adults who have relevant skills for employment and entrepreneurship
- 2. Increased number of start-ups and/or scale ups utilising business incubation, acceleration and co-working space



CONNECTED

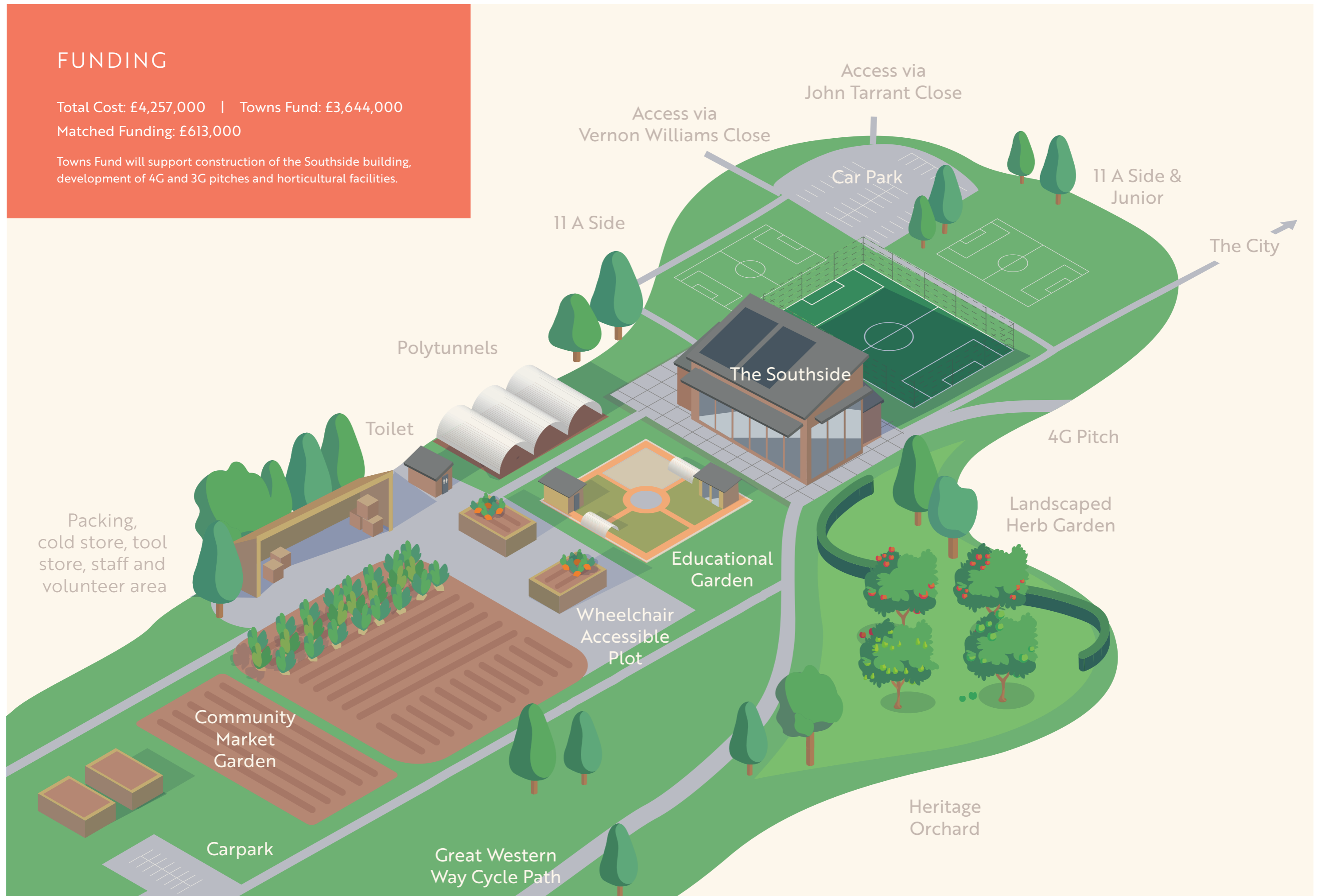


# FUNDING

Total Cost: £4,257,000 | Towns Fund: £3,644,000

Matched Funding: £613,000

Towns Fund will support construction of the Southside building, development of 4G and 3G pitches and horticultural facilities.



## ALIGNED INVESTMENTS



### TOWNS FUND PROJECTS

1. Soil from the City
2. Electric Buses
3. Greening the City
4. NMITE Future of Work Hub
5. School of Creative Digital Futures
6. Maylord Library and Learning Resource Centre
7. Holmer Extreme Sports Hub
8. Castle Green Pavilion
9. The Marches Experience (Museum)
10. Meadow Arts (Station Approach)
11. Encore Music Hub
12. Powerhouse
13. Digital Culture Hub
14. River Wye infrastructure
15. Southside



### EXISTING PROJECTS

- A. City Centre Improvement Package
- B. Integrated Transport Hub
- C. Hereford Enterprise Zone
- D. NMITE University
- E. Urban Village Development

